

Online Appendix for "Where, when, and how does the UN work to prevent civil war in self-determination disputes?"

- Table A1: SD Groups and Civil War Onsets 1960-2005 (pp. 2-5)
- Table A2: Self-Determination Movements in P-5 States 1960-2005 (p. 6)
- Figure A1: ROC Plots of Models 2-5 (p. 7)
- Table A3: Determinants of Resolutions in SD Disputes with No Previous Civil War (p. 8)
- Table A4: Lagged and Contemporaneous Nearby Civil War (p. 9)
- Table A5: Excludes Dispute-years with Any Other Ongoing Conflict in the Country (p. 10)
- Table A6: Controlling for Other UNSC Actions (p. 11)
- Table A7: Excluding Short Periods of Peace (p. 12)
- Table A8: Controlling for History of UNSC Actions (p. 13)
- Table A9: Including Moving Average of Past Civil Wars in State (p. 14)
- Table A10: Including Moving Average of Past Nearby Civil Wars (p. 15)
- Table A11: Alternative Coding of UNSC Actions to Exclude Actions that Occurred in Year of Civil War Onset, but after Onset (p. 16)
- Table A12: Alternative Coding of Ongoing Civil War; Dispute-years where Resolutions that Came after Onset Coded as Ongoing (and excluded) (p. 17)
- Table A13: Including Civil War Propensity Score instead of Country- and Dispute-level Controls (p. 18)
- Table A14: Nearby Civil War Recoded with Only Adjacent States with Close Capitals (p. 19)
- Table A15: Nearby Civil War Recoded to Capture Only Territorial Civil War (p. 20)
- Table A16: Trade Relationship of Home Country to P-5 States (p. 21)
- Table A17: Controlling for History of Violence for Other SD Groups in Country (p. 22)

Table A1: SD Groups and Civil War Onsets 1960-2005

Country	SD group¹	Number of civil war onsets 1960-2005	Region
Afghanistan	Tajiks	2	South Asia
Afghanistan	Uzbeks	1	South Asia
Algeria	Berbers	0	Middle East/North Africa
Angola	Cabindans	3	Sub-Saharan Africa
Australia	Aboriginals	0	Oceania
Azerbaijan	Armenians	2	(former) Soviet Union
Azerbaijan	Lezgins	0	(former) Soviet Union
Bangladesh	Chittagong Hill Peoples	1	South Asia
Belgium	Flemings	0	Western Europe
Belgium	Walloons	0	Western Europe
Bhutan	Lhotshampas	0	South Asia
Bosnia	Croats	1	Eastern Europe
Bosnia	Serbs	1	Eastern Europe
Brazil	Indigenous Peoples	0	South/Latin America
Cameroon	Westerners	0	Sub-Saharan Africa
Canada	Indigenous Peoples	0	North America
Canada	Quebecois	0	North America
Chad	Southerners	0	Sub-Saharan Africa
Chile	Indigenous Peoples	0	South/Latin America
China	Mongols	0	East Asia
China	Tibetans	0	East Asia
China	Uighers	0	East Asia
Colombia	Indigenous Peoples	0	South/Latin America
Comoros	Anjouanese	1	Sub-Saharan Africa
Congo-Kinshasa	Bakongo	0	Sub-Saharan Africa
Congo-Kinshasa	Lunda and Yeke	1	Sub-Saharan Africa
Croatia	Serbs	1	Eastern Europe
Cyprus	Turkish Cypriots	1	Middle East/North Africa
Djibouti	Afars	2	Sub-Saharan Africa
Ecuador	Lowland Indigenous Peoples	0	South/Latin America
Equatorial Guinea	Bubis	0	Sub-Saharan Africa
Ethiopia	Afars	2	Sub-Saharan Africa
Ethiopia	Eritreans	1	Sub-Saharan Africa
Ethiopia	Oromos	2	Sub-Saharan Africa

¹ Our use of Cunningham's (2013) factions variable in our analyses drops three SD groups included in the CIDCM list from the analysis, and so they are not listed here: Dayaks (Indonesia), Avars (Russia), and Lebanese Palestinians.

Ethiopia	Somalis	3	Sub-Saharan Africa
Finland	Saami	0	Western Europe
France	Basque	0	Western Europe
France	Bretons	0	Western Europe
France	Corsicans	0	Western Europe
Georgia	Abkhazians	1	(former) Soviet Union
Georgia	Adzhars	0	(former) Soviet Union
Georgia	South Ossetians	2	(former) Soviet Union
India	Assamese	2	South Asia
India	Bodos	2	South Asia
India	Kashmiri Buddhist Ladakhis	0	South Asia
India	Kashmiri Hindus	0	South Asia
India	Kashmiri Muslims	1	South Asia
India	Mizos	1	South Asia
India	Nagas	3	South Asia
India	Reang (Bru)	0	South Asia
India	Sikhs	1	South Asia
India	Tripuras	2	South Asia
Indonesia	Acehnese	2	East Asia
Indonesia	East Timorese	3	East Asia
Indonesia	Papuans	3	East Asia
Iran	Kurds	4	Middle East/North Africa
Iraq	Kurds	3	Middle East/North Africa
Israel	Palestinians	1	Middle East/North Africa
Italy	Sardinians	0	Western Europe
Italy	South Tyrolians	0	Western Europe
Kazakhstan	Russians	0	(former) Soviet Union
Kyrgyzstan	Uzbeks	0	(former) Soviet Union
Laos	Hmong	0	East Asia
Macedonia	Albanians	0	Eastern Europe
Mali	Tuaregs	2	Sub-Saharan Africa
Mexico	Indigenous Peoples (non-Mayan or Zapotecs)	0	South/Latin America
Moldova	Gagauz	0	(former) Soviet Union
Moldova	Trans-Dniester Slavs	1	(former) Soviet Union
Morocco	Saharawis	1	Middle East/North Africa
Myanmar	Chin/Zomis	0	East Asia
Myanmar	Kachins	1	East Asia
Myanmar	Karaenni	3	East Asia
Myanmar	Karens	2	East Asia
Myanmar	Mons	2	East Asia

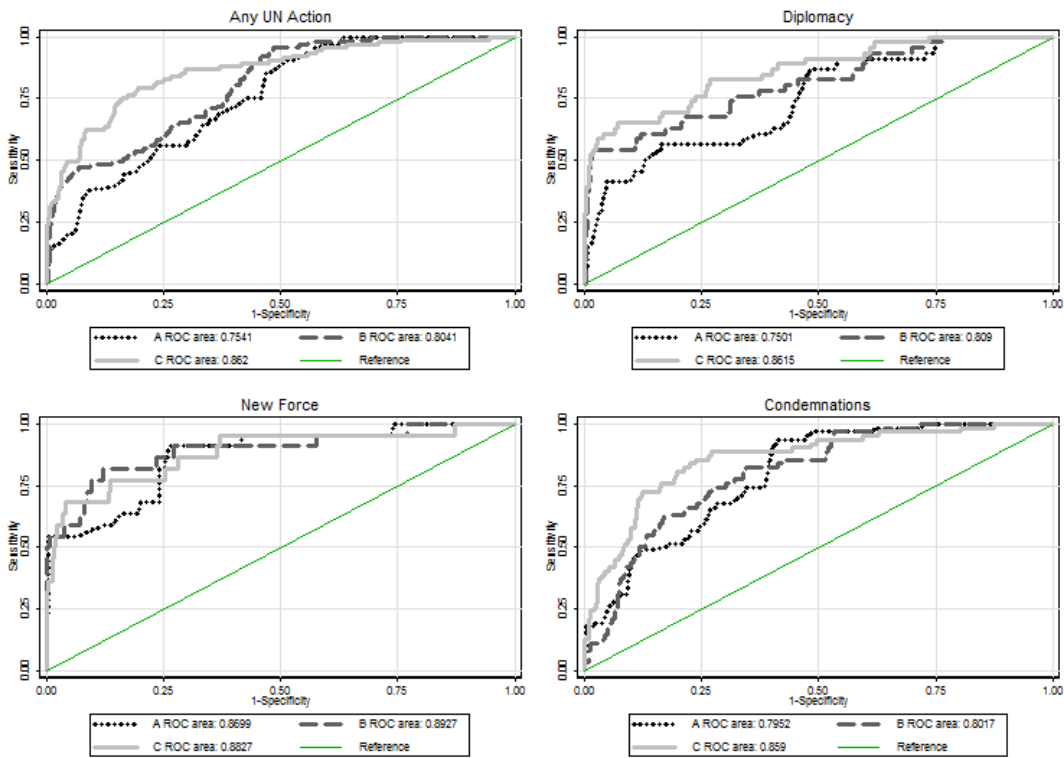
Myanmar	Rohingyas	2	East Asia
Myanmar	Shan	3	East Asia
Myanmar	Wa	1	East Asia
Namibia	East Caprivians	0	Sub-Saharan Africa
Nicaragua	Indigenous Peoples and Creoles	0	South/Latin America
Niger	Tuaregs	1	Sub-Saharan Africa
Nigeria	Ibos	1	Sub-Saharan Africa
Nigeria	Ijaw	1	Sub-Saharan Africa
Nigeria	Ogoni	0	Sub-Saharan Africa
Nigeria	Oron	0	Sub-Saharan Africa
Nigeria	Yoruba	0	Sub-Saharan Africa
Norway	Saami	0	Western Europe
Pakistan	Baluchis	1	South Asia
Pakistan	Bengalis	1	South Asia
Pakistan	Pashtuns	0	South Asia
Pakistan	Sarakis	0	South Asia
Pakistan	Sindhis	0	South Asia
Papua New Guinea	Bougainvilleans	1	Oceania
Peru	Lowland Indigenous Peoples	0	South/Latin America
Philippines	Igorots	0	East Asia
Philippines	Moros	2	East Asia
Romania	Magyars	0	Eastern Europe
Russia	Buryat	0	(former) Soviet Union
Russia	Chechens	2	(former) Soviet Union
Russia	Kumyks	0	(former) Soviet Union
Russia	Lezgins	0	(former) Soviet Union
Russia	Tatars	0	(former) Soviet Union
Russia	Yakut	0	(former) Soviet Union
Senegal	Casamacias	1	Sub-Saharan Africa
Slovakia	Hungarians	0	Eastern Europe
Somalia	Isaaq	1	Sub-Saharan Africa
Somalia	Puntland Darods	0	Sub-Saharan Africa
South Africa	Afrikaners	0	Sub-Saharan Africa
South Africa	Khoisan	1	Sub-Saharan Africa
South Africa	Zulus	1	Sub-Saharan Africa
Spain	Basques	3	Western Europe
Spain	Catalans	0	Western Europe
Sri Lanka	Muslims	0	South Asia
Sri Lanka	Tamils	1	South Asia
Sudan	Nuba	0	Sub-Saharan Africa
Sudan	Southerners	2	Sub-Saharan Africa

Sweden	Saami	0	Western Europe
Switzerland	Jurassians	0	Western Europe
Taiwan	Aboriginal Taiwanese	0	East Asia
Tanzania	Zanzibaris	0	Sub-Saharan Africa
Thailand	Malay-Muslims	1	East Asia
Trinidad and Tobago	Tobagonians	0	South/Latin America
Turkey	Kurds	1	Middle East/North Africa
Uganda	Baganda	0	Sub-Saharan Africa
Ukraine	Crimean Russians	0	(former) Soviet Union
Ukraine	Crimean Tatars	0	(former) Soviet Union
United Kingdom	Catholics	2	Western Europe
United Kingdom	Cornish	0	Western Europe
United Kingdom	Scots	0	Western Europe
United States	Indigenous Peoples	0	North America
United States	Native Hawaiians	0	North America
United States	Puerto Ricans	0	North America
Uzbekistan	Tajiks	0	(former) Soviet Union
Vietnam	Montagnards	0	East Asia
Yugoslavia	Albanians	0	Eastern Europe
Yugoslavia	Croats	1	Eastern Europe
Yugoslavia	Hungarians	0	Eastern Europe
Yugoslavia	Kosovar Albanians	1	Eastern Europe
Yugoslavia	Montenegrins	0	Eastern Europe
Yugoslavia	Sandzak Muslims	0	Eastern Europe
Yugoslavia	Slovenes	1	Eastern Europe
Zambia	Lozi	0	Sub-Saharan Africa
Zimbabwe	Ndebele	0	Sub-Saharan Africa

Table A2: Self-Determination Movements in P-5 States 1960-2005

China	France	Russia	United Kingdom	United States
Mongols	Basque	Avars	Northern Ireland	Indigenous Peoples
Tibetans	Bretons	Buryat	Cornish	Native Hawaiians
Uighers	Corsicans	Chechens	Scots	Puerto Ricans
		Kumyks		
		Lezgins		
		Tatars		
		Yakut		

Figure A2: ROC Plots of Models 2-5



Analyzing the effect of these variables on our ability to predict UN action reveals the substantive importance of regional contagion and conflict history and the relative unimportance of dispute and state-level characteristics. Figure 1 plots the receiver-operator curve (ROC) plots related to Models 2-5 in Table 6. These curves help diagnose the in-sample predictive advantages of different models. For each type of UNSC action in Models 2-5, we show the ROC plots and display the areas under the curves (AUCs) for three competing models. Model A has only the control variables; Model B adds the dispute and state-level characteristics; and Model C is the full model that also includes information on previous civil wars and nearby civil wars. We see that the full model (C) dominates the more limited models for all types of UNSC activity except for authorizations of new force.²

² Recalling that the outcome is a rare event, the areas on the left sides of the plots are more relevant, as we would need relatively low thresholds of predicted probabilities to make meaningful guesses of the action the UNSC might take in a particular case.

Table A3: Determinants of Resolutions in SD Disputes with No Previous Civil War³

	Logit Civil War	RE Logit Any UNSC	RE Logit Diplomatic	RE Logit Force ⁴	RE Logit Condemn
Factions (logged)	2.409* (0.639)	3.008+ (1.750)	2.576 (1.727)	1.619 (1.059)	1.727 (1.204)
Previous Concessions (lag)	0.429* (0.175)	2.391 (1.527)	1.278 (1.151)		1.512 (1.442)
GDP per capita (lag)	0.698* (0.124)	1.288 (0.944)	0.780 (0.867)	0.474 (0.484)	0.610 (0.489)
Democracy (lag)	0.442* (0.174)	0.767 (0.549)	0.969 (1.729)	1.546 (3.073)	1.168 (1.323)
Neighboring Kin	1.481 (0.545)	3.488 (4.804)	1.602 (2.462)		1.197 (1.679)
Years since Civil War	0.979 (0.015)	0.942 (0.044)	0.891 (0.102)	0.996 (0.029)	0.977 (0.030)
Nearby Civil War		1.425 (0.587)	2.295+ (1.102)	2.143 (1.056)	1.077 (0.653)
Other Civil War in State		5.667 (6.694)	2.021 (2.330)	2.697 (3.933)	4.196 (6.190)
Cold War		3.541 (2.837)	13.280* (16.100)	1.725 (1.885)	1.726 (1.460)
Nearby States		1.048 (0.132)	1.134 (0.218)	1.141 (0.254)	1.185 (0.194)
N	1854	774	774	333	774

Exponentiated coefficients (odds ratios); Robust standard errors in parentheses
+ p<0.10; *p<0.05, two-tailed

³ In these models, there is also some limited evidence suggesting the UNSC is responsive to potential early-warning indicators of conflict — the presence of more factions in the SD movement is positive and statistically significant at the .10 level in the Any UNSC Action model. However, no other dispute- or country-level factors are statistically significant in any of the models.

⁴ Since no UNSC action was taken in SD disputes in this subsample within states that are either P-5 states or their allies, we dropped this variable from our analysis and all SD disputes in such states. For the UNSC new force resolutions, ethnic kin and previous concessions were perfect predictors, so we also omitted these variables from that model, as well as the observations with the presence of ethnic kin and without previous concessions.

Table A4: Lagged and Contemporaneous Nearby Civil War

	RE Logit Any UNSC	RE Logit Diplomacy	RE Logit Force	RE Logit Condemn
Previous Civil War	14.710* (10.780)	12.540* (8.138)	9.021* (6.180)	19.800* (17.830)
Nearby Civil War	1.837* (0.291)	2.439* (0.501)	1.357 (0.580)	1.853* (0.465)
Nearby Civil War (lag)	1.167 (0.278)	1.470 (0.488)	1.068 (0.581)	1.000 (0.260)
Other Civil War in State	0.425 (0.308)	0.225+ (0.197)	0.553 (0.414)	0.585 (0.437)
Factions (logged)	0.604 (0.354)	0.651 (0.255)	0.822 (0.345)	0.500 (0.338)
Previous Concessions (lag)	1.558 (1.265)	0.726 (0.632)	0.266* (0.146)	1.994 (1.464)
GDP per capita (lag)	2.345* (0.598)	2.020* (0.719)	1.187 (0.594)	2.371* (0.804)
Democracy (lag)	0.728 (0.638)	2.852+ (1.754)	0.436 (0.501)	0.328 (0.275)
Neighboring Kin	1.790 (1.817)	1.326 (1.347)	0.929 (0.852)	1.603 (1.393)
Years since Civil War	0.973 (0.030)	0.951 (0.039)	0.982 (0.027)	0.998 (0.019)
Cold War	1.206 (1.088)	4.141+ (3.042)	0.455 (0.457)	0.313+ (0.219)
P-5 or P-5 ally	0.321 (0.386)	0.0636+ (0.090)	0.825 (1.302)	1.115 (0.992)
Nearby States	1.047 (0.060)	0.984 (0.082)	1.133 (0.092)	1.074 (0.074)
N	2485	2485	2485	2485

Exponentiated coefficients (odds ratios); Robust standard errors in parentheses

+ p<0.10, * p<0.05, two-tailed

Table A5: Excludes Dispute-years with Any Other Ongoing Conflict in the Country

	RE Logit Any UNSC	RE Logit Diplomacy	RE Logit Force	RE Logit Condemn
Previous Civil War	23.810* (19.530)	13.950* (9.551)	10.150* (11.930)	20.730* (17.110)
Nearby Civil War	2.474* (0.546)	3.647* (1.137)	1.661 (0.594)	2.049* (0.526)
Factions (logged)	0.487 (0.291)	0.509+ (0.189)	0.621 (0.284)	0.500 (0.344)
Previous Concessions (lag)	1.428 (1.369)	0.866 (0.903)	0.374 (0.301)	1.685 (1.237)
GDP per capita (lag)	2.551* (0.724)	2.794* (0.904)	2.023 (1.073)	2.439* (0.815)
Democracy (lag)	0.766 (0.722)	2.454 (1.424)	0.217+ (0.202)	0.306 (0.258)
Neighboring Kin	1.677 (1.902)	1.371 (1.617)	0.656 (0.608)	1.478 (1.248)
Years since Civil War	0.964 (0.035)	0.940 (0.038)	0.978 (0.031)	1.000 (0.021)
Cold War	1.336 (1.330)	3.898+ (3.002)	0.315 (0.464)	0.313 (0.240)
P-5 or P-5 ally	0.269 (0.312)	0.051+ (0.079)	0.962 (1.801)	0.993 (0.801)
Nearby States	1.008 (0.066)	0.929 (0.057)	1.087 (0.077)	1.027 (0.071)
N	1765	1765	1765	1765

Exponentiated coefficients (odds ratios); Robust standard errors in parentheses
+ p<0.10, * p<0.05, two-tailed

Table A6: Controlling for Other UNSC Actions

	RE Logit Diplomacy	RE Logit Force	RE Logit Condemn
Previous Civil War	5.113* (2.507)	3.816* (2.024)	7.174* (6.851)
Nearby Civil War	3.428* (1.256)	0.897 (0.476)	1.211 (0.464)
Other Civil War in State	0.420 (0.305)	0.532 (0.407)	0.755 (0.461)
Factions (logged)	0.657 (0.213)	0.986 (0.309)	0.600 (0.430)
Previous Concessions (lag)	1.666 (1.459)	0.116* (0.119)	2.019 (1.457)
GDP per capita (lag)	1.809+ (0.599)	0.883 (0.456)	1.730+ (0.522)
Democracy (lag)	3.815+ (2.757)	0.829 (1.035)	0.303+ (0.195)
Neighboring Kin	1.441 (1.366)	1.625 (2.190)	1.664 (1.094)
Years since Civil War	0.942+ (0.032)	0.956 (0.039)	0.993 (0.022)
Cold War	7.523* (5.039)	0.413* (0.112)	0.215* (0.063)
P-5 or P-5 ally	0.035* (0.036)	1.048 (0.622)	1.988 (1.307)
Nearby States	0.947 (0.065)	1.084+ (0.049)	1.071 (0.061)
UNSC Condemnation	20.600* (21.730)	7.301 (9.666)	
UNSC Force	46.670 (120.300)		10.740+ (14.670)
UNSC Diplomacy		17.520 (43.430)	21.670* (19.180)
N	2502	2502	2502

Exponentiated coefficients (odds ratios); Robust standard errors in parentheses

+ p<0.10, * p<0.05, two-tailed

Table A7: Excluding Short Periods of Peace

	RE Logit Any UNSC	RE Logit Diplomacy	RE Logit Force ⁵	RE Logit Condemn
Previous Civil War	12.630* (12.150)	19.600* (24.060)	4.101 (4.596)	20.370* (26.570)
Nearby Civil War	2.027* (0.436)	3.381* (1.019)	1.319 (0.377)	1.660+ (0.446)
Other Civil War in State	0.620 (0.463)	0.216 (0.264)	0.869 (0.811)	0.714 (0.597)
Factions (logged)	0.667 (0.498)	0.782 (0.331)	1.124 (0.437)	0.431 (0.417)
Previous Concessions (lag)	1.783 (1.629)	0.385 (0.485)	0.215 (0.217)	3.232 (3.791)
GDP per capita (lag)	2.801* (0.811)	2.768* (1.369)	1.264 (0.797)	3.038* (1.576)
Democracy (lag)	0.711 (0.635)	2.987 (2.652)	2.145 (2.935)	0.364 (0.355)
Neighboring Kin	2.016 (2.105)	1.256 (1.210)	0.817 (0.929)	1.894 (1.941)
Years since Civil War	0.962 (0.036)	0.932 (0.055)	0.986 (0.048)	0.986 (0.027)
Cold War	1.184 (1.066)	4.904* (3.714)	1.078 (0.491)	0.294+ (0.191)
P-5 or P-5 ally	0.245 (0.308)	0.032+ (0.060)		0.827 (0.635)
Nearby States	0.975 (0.060)	0.871+ (0.063)		1.008 (0.093)
N	2076	2076	924	2076

Exponentiated coefficients (odds ratios); Robust standard errors in parentheses

+ p<0.10, * p<0.05, two-tailed

⁵ The New Force model failed to converge with this sample with the P5 or P5 ally indicator, due to the rarity of such an intervention in those cases. Accordingly, the P5/P5 ally indicator was dropped as were the dispute-years with a "1" code on that indicator.

Table A8: Controlling for History of UNSC Actions

	RE Logit Any UNSC	RE Logit Diplomacy	RE Logit Force	RE Logit Condemn
Previous Civil War	2.957* (1.549)	1.459 (1.443)	2.034 (1.865)	2.597 (1.764)
Nearby Civil War	1.410 (0.390)	2.386* (0.870)	1.161 (0.295)	1.194 (0.422)
Other Civil War in State	0.526 (0.346)	0.408 (0.396)	0.657 (0.554)	0.647 (0.409)
Factions (logged)	0.810 (0.366)	0.858 (0.475)	1.116 (0.483)	0.819 (0.428)
Previous Concessions (lag)	2.202 (1.527)	1.530 (1.564)	0.240* (0.146)	2.133 (1.209)
GDP per capita (lag)	1.417 (0.387)	1.057 (0.484)	0.815 (0.400)	1.054 (0.362)
Democracy (lag)	0.404 (0.343)	1.197 (0.603)	0.337 (0.348)	0.285+ (0.206)
Neighboring Kin	1.218 (1.176)	0.922 (0.918)	1.023 (0.973)	1.001 (0.851)
Years since Civil War	0.913 (0.064)	0.821* (0.081)	0.909 (0.079)	0.921 (0.083)
Cold War	1.831 (1.751)	6.857+ (7.707)	0.467 (0.441)	0.531 (0.342)
P-5 or P-5 ally	0.679 (0.788)	0.176 (0.233)	1.286 (1.720)	2.930 (3.142)
Nearby States	1.048 (0.073)	1.002 (0.117)	1.053 (0.080)	1.075 (0.110)
Cumulative UNSC Actions (lag)	1.087* (0.045)	1.110* (0.042)	1.080* (0.036)	1.089* (0.046)
N	2502	2502	2502	2502

Exponentiated coefficients (odds ratios); Robust standard errors in parentheses

+ p<0.10, * p<0.05, two-tailed

Table A9: Including Moving Average of Past Civil Wars in State

	RE Logit Any UNSC	RE Logit Diplomacy	RE Logit Force	RE Logit Condemn
Previous Civil War	14.650* (9.222)	11.850* (5.100)	6.532* (3.768)	15.540* (12.220)
Nearby Civil War	2.047* (0.492)	3.324* (1.045)	1.335 (0.415)	1.843* (0.495)
Other Civil War in State (moving average)	0.264 (0.258)	0.574 (0.273)	0.940 (0.411)	0.630 (0.652)
Other Civil War in State	0.732 (0.488)	0.471 (0.437)	0.883 (0.824)	0.862 (0.584)
Factions (logged)	0.719 (0.425)	0.863 (0.399)	0.981 (0.391)	0.613 (0.387)
Previous Concessions (lag)	1.617 (1.283)	0.857 (0.631)	0.260* (0.152)	1.892 (1.347)
GDP per capita (lag)	1.994* (0.541)	1.685 (0.721)	0.943 (0.570)	1.953+ (0.674)
Democracy (lag)	0.710 (0.618)	2.406 (1.473)	0.400 (0.444)	0.337 (0.281)
Neighboring Kin	1.638 (1.656)	1.211 (1.204)	0.957 (0.950)	1.633 (1.468)
Years since Civil War	0.975 (0.026)	0.956 (0.031)	0.974 (0.032)	0.996 (0.018)
Cold War	1.387 (1.212)	4.504* (3.094)	0.473 (0.512)	0.345 (0.224)
P-5 or P-5 ally	0.332 (0.394)	0.068+ (0.095)	0.987 (1.600)	1.176 (1.062)
Nearby States	1.069 (0.066)	1.026 (0.110)	1.178 (0.119)	1.100 (0.083)
N	2502	2502	2502	2502

Exponentiated coefficients (odds ratios); Robust standard errors in parentheses

+ p<0.10, * p<0.05, two-tailed

Table A10: Including Moving Average of Past Nearby Civil Wars

	RE Logit Any UNSC	RE Logit Diplomacy	RE Logit Force	RE Logit Condemn
Previous Civil War	14.820* (14.970)	9.995* (9.985)	4.918* (3.749)	21.980* (29.730)
Nearby Civil War	1.383 (0.288)	1.899* (0.610)	0.661 (0.420)	1.377 (0.378)
Nearby Civil Wars (moving average)	1.833* (0.441)	2.341+ (1.066)	2.415 (1.606)	1.470+ (0.293)
Other Civil War in State	0.346 (0.285)	0.175 (0.208)	0.513 (0.465)	0.677 (0.601)
Factions (logged)	0.478 (0.315)	0.490+ (0.211)	0.556 (0.298)	0.363 (0.324)
Previous Concessions (lag)	1.826 (1.852)	0.732 (0.794)	0.375 (0.334)	3.171 (3.489)
GDP per capita (lag)	2.443* (0.746)	2.035* (0.614)	1.735 (0.997)	3.127* (1.643)
Democracy (lag)	0.869 (0.836)	4.094+ (3.002)	0.673 (0.850)	0.337 (0.319)
Neighboring Kin	1.942 (2.203)	1.602 (1.740)	0.682 (0.604)	1.887 (1.942)
Years since Civil War	0.973 (0.041)	0.940 (0.051)	0.972 (0.024)	1.000 (0.025)
Cold War	1.271 (1.203)	4.035 (3.441)	0.622 (0.485)	0.280+ (0.215)
P-5 or P-5 ally	0.310 (0.350)	0.069+ (0.098)	0.384 (0.539)	1.044 (0.761)
Nearby States	1.016 (0.058)	0.952 (0.061)	1.053 (0.072)	1.028 (0.081)
N	2267	2267	2267	2267

Exponentiated coefficients (odds ratios); Robust standard errors in parentheses

+ p<0.10, * p<0.05, two-tailed

Table A11: Alternative Coding of UNSC Actions to Exclude Actions that Occurred in Year of Civil War Onset, but after Onset

	RE Logit Any UNSC	RE Logit Diplomacy	RE Logit Force	RE Logit Condemn
Previous Civil War	25.260* (19.160)	14.350* (8.117)	9.570* (6.530)	94.620* (146.400)
Nearby Civil War	2.421* (0.604)	3.288* (1.038)	1.378 (0.427)	2.343* (0.727)
Other Civil War in State	0.298 (0.242)	0.210+ (0.185)	0.539 (0.414)	1.277 (0.926)
Factions (logged)	0.389+ (0.220)	0.677 (0.259)	0.828 (0.348)	0.294 (0.222)
Previous Concessions (lag)	1.520 (1.498)	0.766 (0.661)	0.272* (0.156)	2.543 (2.425)
GDP per capita (lag)	2.574* (0.775)	2.046* (0.732)	1.187 (0.591)	3.547* (1.688)
Democracy (lag)	0.953 (0.835)	2.782+ (1.666)	0.428 (0.489)	0.230+ (0.194)
Neighboring Kin	1.597 (1.789)	1.389 (1.444)	0.911 (0.872)	1.085 (1.128)
Years since Civil War	0.959 (0.029)	0.955 (0.036)	0.983 (0.029)	1.013 (0.020)
Cold War	1.257 (1.185)	4.337* (3.111)	0.477 (0.481)	0.179 (0.233)
P-5 or P-5 ally	0.321 (0.359)	0.060* (0.085)	0.821 (1.286)	1.885 (1.421)
Nearby States	1.025 (0.067)	0.980 (0.081)	1.135 (0.090)	1.090 (0.105)
N	2502	2502	2502	2502

Exponentiated coefficients (odds ratios); Robust standard errors in parentheses

+ p<0.10, * p<0.05, two-tailed

Table A12: Alternative Coding of Ongoing Civil War; Dispute-years where Resolutions that Came after Onset Coded as Ongoing (and excluded)

	RE Logit Any UNSC	RE Logit Diplomacy	RE Logit Force	RE Logit Condemn
Previous Civil War	25.100* (19.180)	14.090* (8.045)	9.481* (6.509)	43.800* (56.210)
Nearby Civil War	2.406* (0.595)	3.254* (1.013)	1.376 (0.426)	2.253* (0.682)
Other Civil War in State	0.298 (0.241)	0.210+ (0.185)	0.542 (0.422)	0.887 (0.747)
Factions (logged)	0.392 (0.224)	0.687 (0.265)	0.831 (0.353)	0.305+ (0.208)
Previous Concessions (lag)	1.524 (1.501)	0.764 (0.656)	0.272* (0.156)	2.029 (1.742)
GDP per capita (lag)	2.579* (0.772)	2.060* (0.741)	1.186 (0.595)	3.055* (1.318)
Democracy (lag)	0.955 (0.837)	2.799+ (1.680)	0.427 (0.488)	0.298 (0.240)
Neighboring Kin	1.610 (1.804)	1.407 (1.461)	0.913 (0.875)	1.009 (0.829)
Years since Civil War	0.959 (0.029)	0.954 (0.036)	0.983 (0.029)	1.000 (0.019)
Cold War	1.255 (1.178)	4.318* (3.081)	0.477 (0.480)	0.236+ (0.200)
P-5 or P-5 ally	0.319 (0.359)	0.059* (0.085)	0.821 (1.289)	1.497 (1.216)
Nearby States	1.024 (0.066)	0.978 (0.081)	1.135 (0.091)	1.066 (0.093)
N	2496	2496	2496	2496

Exponentiated coefficients (odds ratios); Robust standard errors in parentheses

+ p<0.10, * p<0.05, two-tailed

Table A13: Including Civil War Propensity Score instead of Country- and Dispute-level Controls

	RE Logit Any UNSC	RE Logit Diplomacy	RE Logit Force	RE Logit Condemn
Previous Civil War	30.840* (11.180)	42.110* (21.440)	12.150* (9.782)	24.540* (20.050)
Nearby Civil War	2.264* (0.753)	3.801* (1.713)	0.857 (0.227)	1.640+ (0.484)
Other Civil War in State	0.182+ (0.164)	0.0607* (0.086)	0.300 (0.360)	0.329 (0.292)
Cold War	1.692 (1.737)	7.785* (7.317)	0.945 (0.520)	0.364 (0.294)
P-5 or P-5 ally	0.310 (0.365)	0.064* (0.087)	0.226 (0.262)	0.974 (1.051)
Nearby States	1.080 (0.056)	1.048 (0.065)	1.097 (0.069)	1.075 (0.072)
Civil War Propensity	<0.001+ ⁶ (<0.001)	<0.001 ⁷ (<0.001)	0.298 (2.449)	<0.001 ⁸ (<0.001)
N	2321	2321	2321	2321

Exponentiated coefficients (odds ratios); Robust standard errors in parentheses

+ p<0.10, * p<0.05, two-tailed

⁶ The coefficient is 0.00000296, and the standard error is 0.00000236.

⁷ The coefficient is 0.00000519, and the standard error is 0.0000384.

⁸ The coefficient is 0.000000243, and the standard error is 0.00000340.

Table A14: Nearby Civil War Recoded with Only Adjacent States with Close Capitals

	RE Logit Any UNSC	RE Logit Diplomacy	RE Logit Force	RE Logit Condemn
Previous Civil War	9.560* (9.439)	4.708+ (3.874)	3.359 (3.059)	11.830* (13.56)
Nearby Civil War (restrictive)	0.540 (0.253)	1.707 (1.139)	1.094 (0.460)	0.768 (0.417)
Other Civil War in State	0.402 (0.271)	0.444 (0.422)	0.571 (0.436)	0.529 (0.324)
Factions (logged)	0.579 (0.411)	0.757 (0.373)	0.891 (0.481)	0.442 (0.336)
Previous Concessions (lag)	2.209 (1.282)	1.828 (1.385)	0.220* (0.166)	2.033 (1.161)
GDP per capita (lag)	3.245* (1.015)	4.131* (2.748)	1.644 (1.025)	2.701* (0.764)
Democracy (lag)	0.553 (0.373)	1.459 (1.025)	0.584 (0.621)	0.414 (0.298)
Neighboring Kin	3.135 (2.822)	2.080 (1.807)	2.033 (1.815)	3.011 (2.504)
Years since Civil War	0.965 (0.027)	0.936 (0.044)	0.943 (0.048)	0.985 (0.020)
Cold War	0.938 (0.781)	2.320 (1.355)	0.298 (0.273)	0.252+ (0.194)
P-5 or P-5 ally	0.154 (0.227)	0.021* (0.038)	0.402 (0.666)	0.579 (0.583)
Nearby States	0.745+ (0.126)	0.432* (0.144)	0.851 (0.187)	0.837 (0.126)
N	2502	2502	2502	2502

Exponentiated coefficients (odds ratios); Robust standard errors in parentheses

+ p<0.10, * p<0.05, two-tailed

Table A15: Nearby Civil War Recoded to Capture Only Territorial Civil War

	RE Logit Any UNSC	RE Logit Diplomacy	RE Logit Force	RE Logit Condemn
Previous Civil War	14.050* (9.263)	11.890* (5.101)	7.749* (4.868)	15.750* (13.230)
Nearby Civil War (territorial)	2.230* (0.724)	4.378* (1.986)	2.598* (0.984)	1.834* (0.528)
Other Civil War in State	0.484 (0.340)	0.325 (0.293)	0.689 (0.623)	0.680 (0.493)
Factions (logged)	0.708 (0.427)	1.008 (0.476)	0.971 (0.401)	0.595 (0.398)
Previous Concessions (lag)	1.661 (1.336)	0.900 (0.640)	0.215* (0.128)	1.983 (1.379)
GDP per capita (lag)	2.149* (0.586)	1.676 (0.758)	0.906 (0.446)	2.055+ (0.772)
Democracy (lag)	0.752 (0.641)	2.296 (1.184)	0.431 (0.477)	0.358 (0.304)
Neighboring Kin	1.706 (1.785)	1.025 (1.008)	0.730 (0.763)	1.717 (1.585)
Years since Civil War	0.968 (0.029)	0.945 (0.036)	0.979 (0.029)	0.992 (0.017)
Cold War	1.297 (1.252)	5.219* (4.349)	0.477 (0.539)	0.320 (0.253)
P-5 or P-5 ally	0.310 (0.384)	0.052+ (0.080)	0.985 (1.604)	1.128 (1.053)
Nearby States	1.054 (0.061)	1.013 (0.098)	1.170+ (0.107)	1.086 (0.079)
N	2502	2502	2502	2502

Exponentiated coefficients (odds ratios); Robust standard errors in parentheses

+ p<0.10, * p<0.05, two-tailed

Table A16: Trade Relationship of Home Country to P-5 States⁹

	RE Logit Any UNSC	RE Logit Diplomacy	RE Logit Force	RE Logit Condemn
Previous Civil War	15.160* (9.423)	13.730* (6.772)	11.720* (6.928)	14.590* (9.468)
Nearby Civil War	1.244 (0.395)	2.667* (0.907)	0.809 (0.453)	1.030 (0.357)
Other Civil War in State	1.105 (1.025)	0.436 (0.532)	0.638 (0.508)	1.350 (1.043)
Factions (logged)	1.506 (0.994)	2.014+ (0.827)	2.191* (0.584)	1.042 (0.759)
Previous Concessions (lag)	0.755 (0.539)	0.441 (0.295)	0.070* (0.057)	0.883 (0.644)
GDP per capita (lag)	5.546* (2.077)	3.256* (1.620)	1.413 (0.831)	4.537* (2.031)
Democracy (lag)	0.636 (0.357)	0.921 (0.540)	0.550 (0.476)	0.502 (0.312)
Neighboring Kin	0.441 (0.542)	0.252 (0.394)	0.803 (0.704)	0.792 (0.837)
Years since Civil War	0.992 (0.032)	0.977 (0.029)	1.005 (0.022)	1.014 (0.019)
Cold War	0.438 (0.367)	1.215 (0.956)	0.054* (0.074)	0.139* (0.091)
UK trade (logged)	1.073 (0.345)	1.528 (0.655)	1.301 (0.438)	0.797 (0.189)
US trade (logged)	0.639+ (0.157)	0.569* (0.145)	0.791 (0.147)	1.011 (0.226)
France trade (logged)	1.060 (0.380)	0.821 (0.418)	1.093 (0.340)	1.022 (0.301)
China trade (logged)	0.533* (0.086)	0.610* (0.102)	0.418* (0.142)	0.587* (0.063)
Russia trade (logged)	1.458* (0.225)	1.418* (0.193)	1.355 (0.271)	1.262+ (0.157)
Nearby states	0.978 (0.062)	0.997 (0.079)	1.021 (0.068)	0.989 (0.064)
N	1970	1970	1970	1970

Exponentiated coefficients (odds ratios); Robust standard errors in parentheses
+ p<0.10, * p<0.05, two-tailed

⁹ In this analysis, disputes in P5 states are omitted, as the P5 states cannot have international trade with themselves.

Table A17: Controlling for History of Violence for Other SD Groups in Country

	RE Logit Any UNSC	RE Logit Diplomacy	RE Logit Force	RE Logit Condemn
Previous Civil War	12.79* (8.444)	10.71* (4.894)	6.781* (4.265)	17.79* (18.40)
Nearby Civil War (territorial)	2.285* (0.536)	3.410* (1.189)	1.449 (0.465)	2.135* (0.628)
Other SD past violence	3.963 (5.369)	1.427 (2.069)	2.171 (1.929)	6.592 (8.418)
Other Civil War in State	0.288 (0.221)	0.253+ (0.208)	0.550 (0.491)	0.449 (0.334)
Factions (logged)	0.647 (0.346)	0.820 (0.349)	0.844 (0.308)	0.540 (0.297)
Previous Concessions (lag)	1.260 (0.855)	0.776 (0.486)	0.241* (0.138)	1.292 (0.773)
GDP per capita (lag)	2.608* (0.920)	1.818+ (0.655)	1.085 (0.528)	2.664* (1.174)
Democracy (lag)	0.770 (0.571)	2.411 (1.416)	0.418 (0.445)	0.450 (0.262)
Neighboring Kin	3.022 (5.231)	1.530 (2.223)	0.991 (0.993)	2.868 (4.074)
Years since Civil War	0.969 (0.0297)	0.953 (0.0311)	0.976 (0.0290)	0.994 (0.0165)
Cold War	1.321 (1.101)	3.963* (2.774)	0.425 (0.421)	0.392* (0.175)
P-5 or P-5 ally	0.295 (0.289)	0.0699* (0.0944)	0.881 (1.238)	0.971 (0.670)
Nearby States	1.067 (0.0696)	1.019 (0.108)	1.171+ (0.109)	1.118 (0.0911)
N	2502	2502	2502	2502

Exponentiated coefficients (odds ratios); Robust standard errors in parentheses

+ p<0.10, * p<0.05, two-tailed